

Bar Harbour II

Coastal Series

KENT *homes*
A SMARTER WAY TO A LUXURY HOME



Included Elevation A1



Optional Elevation B2



Optional Elevation C3



Optional Elevation D4



Optional Elevation E5




Optional Elevation G7

Bar Harbour II

Coastal Series

KENT *homes*
A SMARTER WAY TO A LUXURY HOME

 2,822 heated sq ft
3,322 heated sq ft with opt bonus room & bath
615 garage sq ft
427 covered outdoor living sq ft



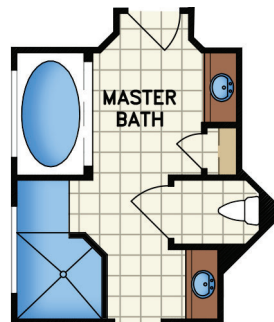
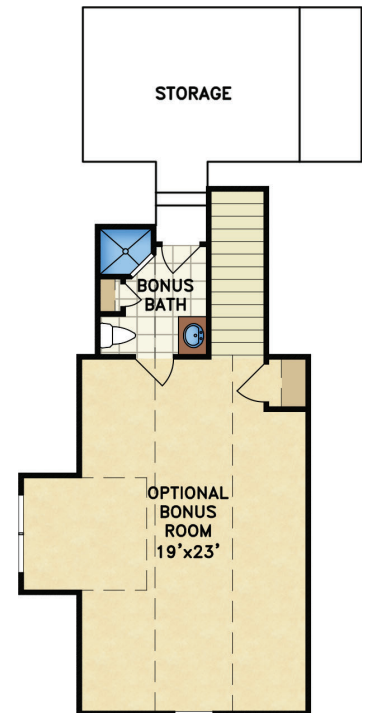
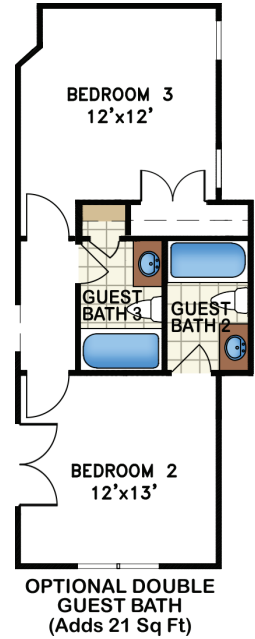
3 bedroom



2.5 bath



61' w x 85' d



OPTIONAL MASTER BATH

All renderings are the artist's impression of the home. The drawings and square-footage notations are approximate and are only to be used for reference. They should not be relied upon as representations, expressed or otherwise, of the final detail of the residence.

©2023 Kent Homes
Rev. 3/22/23

Bar Harbour II

Coastal Series

KENT *homes*
A SMARTER WAY TO A LUXURY HOME



(with optional angled garage)

2,822 heated sq ft

3,322 heated sq ft with opt bonus room & bath

615 garage sq ft

427 covered outdoor living sq ft



3 bedroom



2.5 bath



65' w x 88' d

