



Included Elevation A1



Optional Elevation B2



Optional Elevation C3



Optional Elevation D4



Optional Elevation E5



Optional Elevation F6

Pierre's Bay

Harbour Series

KENT *homes*

A SMARTER WAY TO A LUXURY HOME

- 1,980 heated sq ft
- 2,432 heated sq ft with opt bonus room & bath
- 2,612 heated sq ft with opt bonus room & bath with 4th bedroom
- 525 garage sq ft
- 199 covered outdoor living sq ft



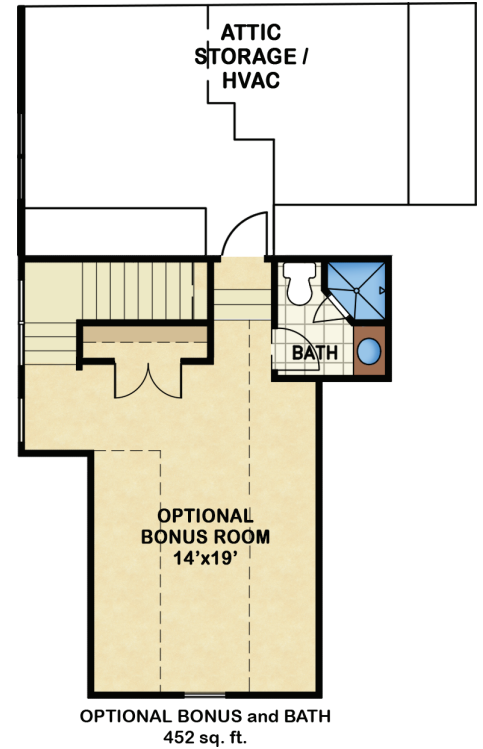
3 bedroom



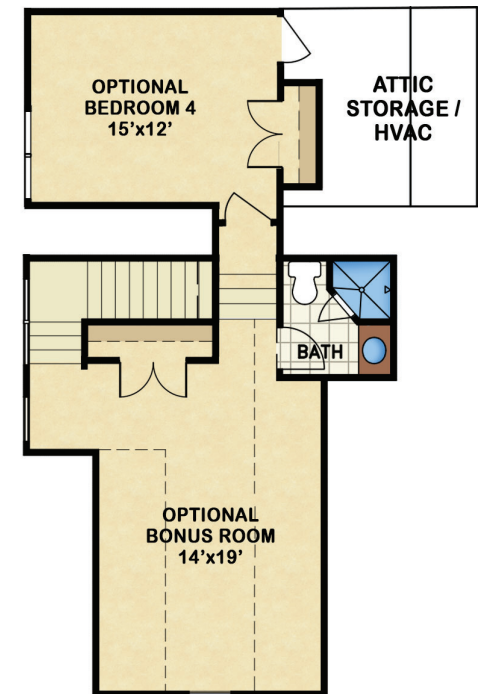
2 bath



55' w x 66' d



OPTIONAL BONUS and BATH
452 sq. ft.



OPTIONAL BONUS/BATH and 4TH BEDROOM
632 sq. ft.