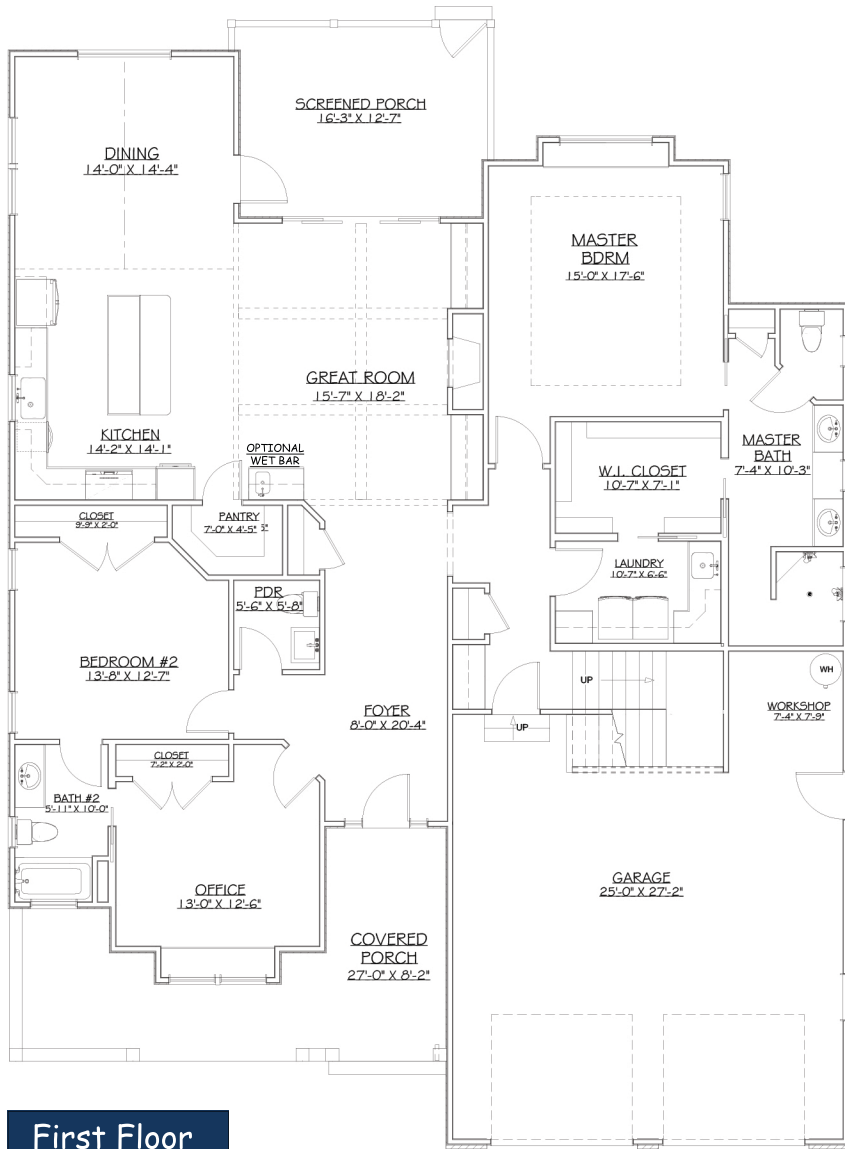
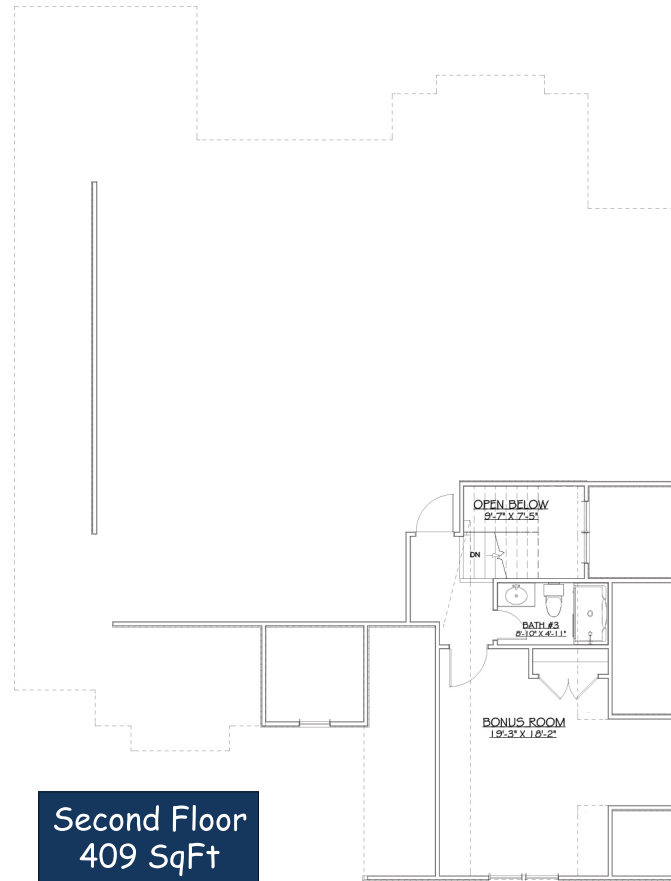


# The Bimini Bay



**First Floor**  
2215 SqFt



**Second Floor**  
409 SqFt

**Building Summary**

**Total Heated:**  
2624 SqFt

**Garage:**  
672 SqFt

**Garage Workshop:**  
60 SqFt

**Covered Porch:**  
265 SqFt

**Screened Porch:**  
207 SqFt

**Total Building Area:**  
3828 SqFt

# The Bimini Bay



Coming Soon to  
The Lakes!



3 Bedrooms, 3.5 Bathrooms  
2624 Square Feet

910-371-2434



[www.brunswickforest.com](http://www.brunswickforest.com)