



Shown: Amelia Bay, Elevation A


Amelia Bay

The Amelia Bay offers that beautiful coastal home with a great open floor plan. A spacious kitchen with wrap-around counter and entertaining island opens up to a vaulted great room and vaulted dining room. Expansive doors lead out to a large screened loggia with adjacent patio to enjoy the coastal weather. A private master suite features his and hers walk-in closets, his and hers vanities, and a large spa-like walk-in shower. Two guest bedrooms and a second floor optional flex room with bath allows for plenty of space and storage.



Standard Elevation A



Optional Elevation B



Optional Elevation C

KENT 

A SMARTER WAY TO A LUXURY HOME

Visit our Design Center today at 1721 Allens Lane, Suite 202, Wilmington, NC 28403
 toll free (877) 256 5313 p (910) 256 5313 f (910) 256 5302 www.kenthomes.net





Amelia Bay



Standard Elevation A



Optional Elevation B



Optional Elevation C

KENT *homes*
A SMARTER WAY TO A LUXURY HOME

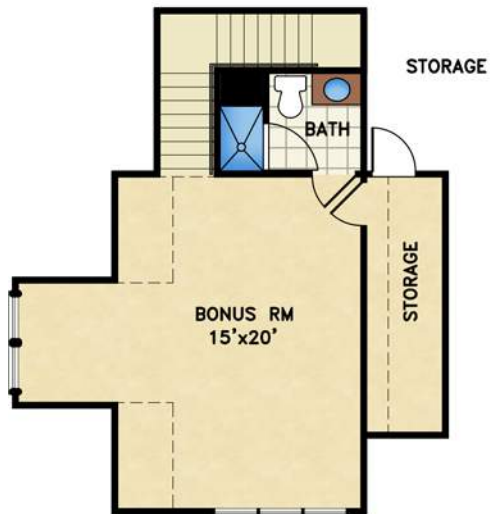
square footage

total heated: 1,840 sq. ft.
garage: 544 sq. ft.
covered outdoor living: 357 sq. ft.

overall dimensions

50' width x 65' depth

OPTIONAL ENLARGED MASTER BEDROOM



OPT BONUS & BATH
586 sq. ft.



All renderings are the artist's impression of the home. The drawings and square-footage notations are approximate and are only to be used for reference. They should not be relied upon as representations, expressed or implied, of the final detail of the residence.

©2016 Kent Homes