

# DESIGN FEATURES

## exterior

- Large front porch with columns and arched detail
- Beautiful concrete driveway with turnout
- Professional sodded yard over the entire lot with complete 5-zone irrigation and a handpicked shrubbery package by the homeowner
- Architectural fiberglass shingles guaranteed with 30 years
- Siding is custom brickwork and horizontal cement board with a long lasting superior look that requires very low maintenance
- All mechanical equipment is architecturally screened by wood enclosure
- Oversized gutter system fixed away from the house
- Generous lighting package to showcase the beauty of your home
- Covered lanai off of screened lanai
- Enormous screened lanai
- Patio for cooking and play
- 8' height rear exterior doors
- Simonton vinyl performance series Energy-Star single hung windows with low-E glass
- 14 seer Bryant HVAC system with programmable thermostat
- High-density grade 1 fiberglass batt insulation R-13 walls, R-30 ceilings/attic
- Ceiling fans on porches
- Moisture barrier taped at all seams and around windows and doors - Energy-Star
- Value-series garage door by Clopay

## builder

Focusing on quality, Fogleman Associates, Inc. builds a select number of custom homes each year that reflect the taste, personality and lifestyle of their owners.

F.M. "Mickey" Fogleman, president and owner of Fogleman Associates, Inc., started his career in real estate sales and development in 1969, transitioning into residential home building six years later. His no-hassle approach to home building has made Fogleman Associates, Inc. one of the most sought-after construction companies in New Hanover and Brunswick counties.

With more than 33 years experience in the home building business, Fogleman Associates, Inc. understands what the client wants: excellent value per heated square foot, a full complement of professional warranties and customer follow-up after the sale.

## interior

- 14' vaulted great room, 9'-12' tall ceilings throughout the house
- Custom built-in bookcase in great room
- Custom wood cabinets in laundry
- Ceramic tile laundry
- Hardwood flooring in all areas except bedrooms, baths and laundry
- Heavy trim package with attention to detail
- Treyed ceilings in dining room, study and master bedroom
- Ceiling fans in great room, master suite, bedrooms and porches
- Security package included
- Pre-wire for sound in three rooms of choice
- Recessed lighting throughout house
- 200 AMP electrical service
- Floored attic storage over garage
- 80 gallon electric water heater – Energy-Star
- Moen faucets with lifetime warranty
- Gas log fireplace with granite surround

## kitchen and bath

- Custom cabinetry with dove-tail joint construction, self-closing drawers, trash pull-outs and general crown moldings
- Custom tiled backsplash with decos
- Granite countertops
- Stainless-steel undermount sink
- GE Profile™ appliances
- Pendants and under cabinet counter lighting
- Custom wood cabinets in baths
- Ceramic tile baths
- Custom tile shower with glass enclosure
- Whirlpool tub in master with tile decking



888.371.2434 | 910.371.2434

[info@brunswickforest.com](mailto:info@brunswickforest.com)

[www.brunswickforest.com](http://www.brunswickforest.com)

1007 Evangeline Drive, Leland, NC 28451

# THE LEXINGTON II



**BRUNSWICK FOREST** <sup>SM</sup>

*Coastal by Nature.*®

*Lifestyle by Design.*

# THE LEXINGTON II

3,231 square feet with flex room  
3 bedrooms, 4.5 baths

## A Stunning Design Makes Living Large

This gorgeous home offers ample space and stunning features

in a well-designed floor plan. The wow

factor begins off the large front

porch leading into a spacious

great room with a high vaulted

ceiling and a gas fireplace. Just off

the entry foyer to the right is an

enclosed study while to the left a

formal open dining room beckons. A

large kitchen serves all, including a

beautifully lit breakfast area. Coming off

the great room at the rear are

covered and screened lanais,

making outdoor living wonderfully

attractive. The master suite

dominates the right wing of the

house and features a large walk-in

closet and a luxurious master bath.

On the other side of the home

bedrooms two and three are served by

their own baths, while a laundry area

and conditioned storage lead to the two-

car garage. Above the garage a flex room with its own bath offers

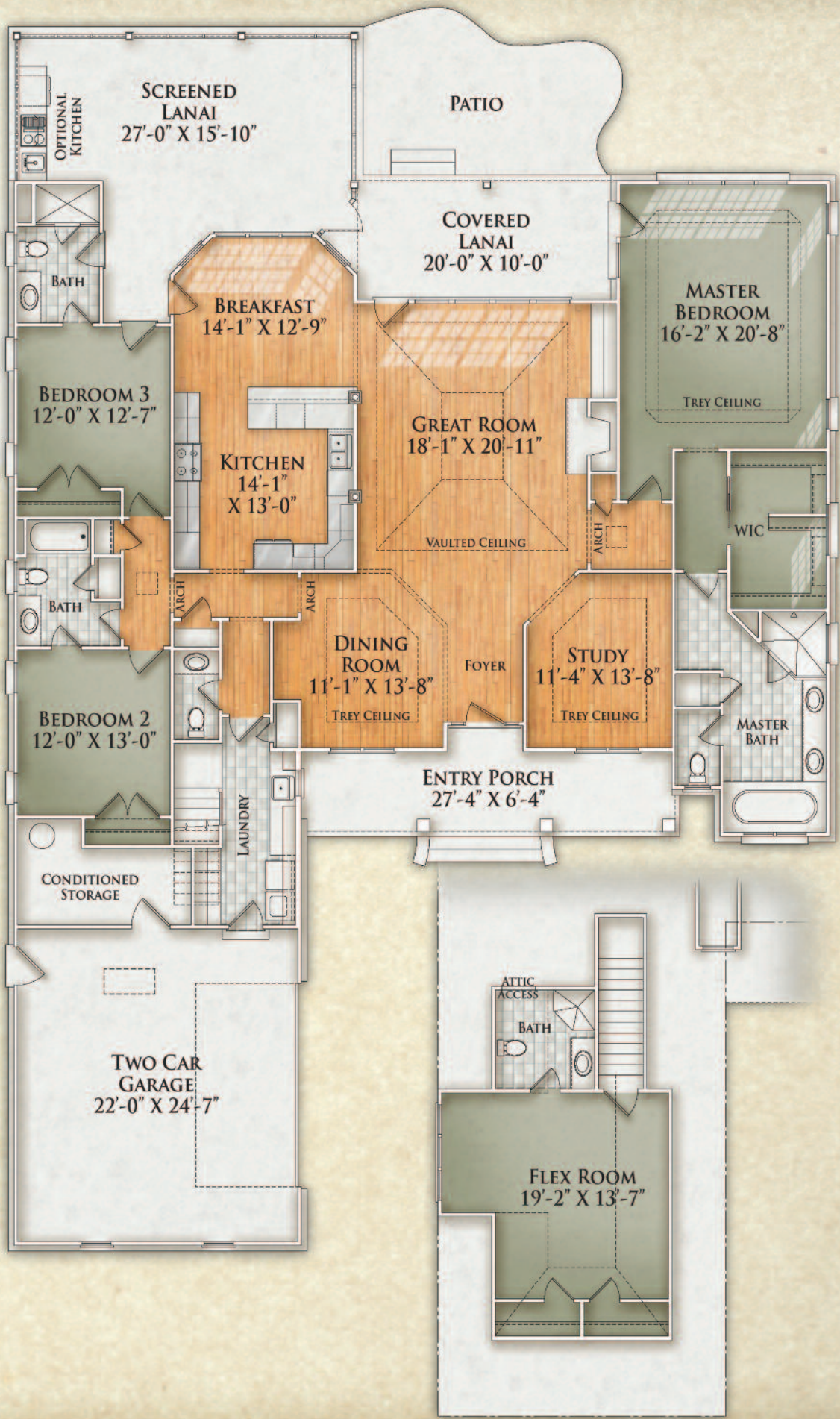
options for entertainment, guests or an upstairs home office.



Option 1



Option 2



The floor plan illustrates a general plan which is subject to future change and revisions. Dimensions, boundaries and position locations are for illustrative purposes only and are not necessarily intended to be exact.