



Shown: Pierre's Bay, Elevation A



Pierre's Bay

The Pierre's Bay offers a beautiful coastal home with a great open floor plan. A spacious kitchen with walk-in pantry, wrap-around counter and large entertaining island opens up to a great room and dining area with a tray ceiling. Expansive doors lead out to a screened loggia with adjacent patio to enjoy the coastal weather. A private master suite is located at the back of the home and features his and hers walk-in closets, his and hers vanities, and a large spa-like walk-in shower. A pocket office, two guest bedrooms, and second floor optional storage and flex room allow for plenty of space and storage.



Elevation A



Elevation B



Elevation C

KENT *homes*

A SMARTER WAY TO A LUXURY HOME

Visit our Design Center today at 1721 Allens Lane, Suite 202, Wilmington, NC 28403
 toll free (877) 256 5313 p (910) 256 5313 f (910) 256 5302 www.kenthomes.net




Pierre's Bay



Elevation A



Elevation B



Elevation C

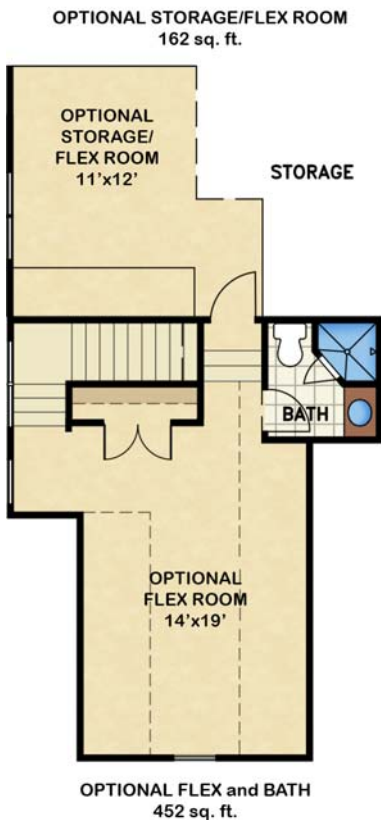
KENT *homes*
 A SMARTER WAY TO A LUXURY HOME

square footage

total heated: 1,980 sq. ft.
 garage: 525 sq. ft.
 covered outdoor living: 199 sq. ft.

overall dimensions

55' width x 66' depth



All renderings are the artist's impression of the home. The drawings and square-footage notations are approximate and are only to be used for reference. They should not be relied upon as representations, expressed or implied, of the final detail of the residence.