

# Mather Greene



## SHELMORE

at Brunswick Forest



Mather Greene I



Mather Greene II



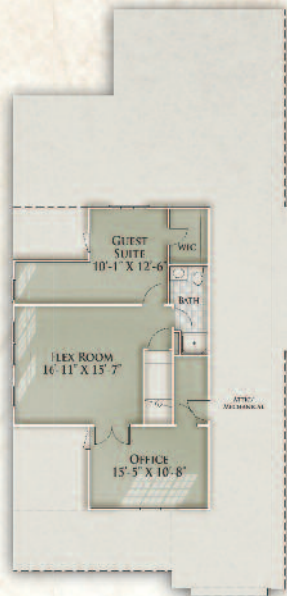
Mather Greene III

[www.brunswickforest.com](http://www.brunswickforest.com) | [info@brunswickforest.com](mailto:info@brunswickforest.com)  
888.371.2434 1007 Evangeline Drive, Leland, NC 28451 910.371.2434

**First Floor Plan**



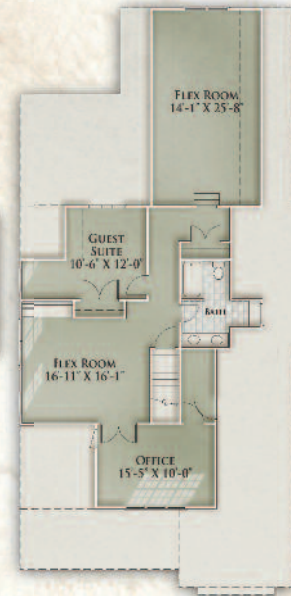
First floor 1718 square feet  
 Second floor 860-1462  
 Porches 350 • Garage 535



**Second Floor A**  
860 heated square feet



**Second Floor B**  
1024 heated square feet



**Second Floor C**  
1325 heated square feet



**Second Floor D**  
1462 heated square feet

**PLANTATION**  
BUILDING CORP

3 bedrooms/3 baths  
 plus guest suite,  
 flex room and office

The floor plan illustrates a general plan which is subject to future change and revisions. Dimensions, boundaries and position locations are for illustrative purposes only and are not necessarily intended to be exact.