



SOUTHPORT
1,919 SQ. FT.



ELEVATION B



ELEVATION A



ELEVATION C

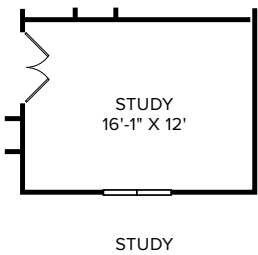
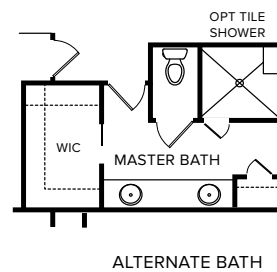
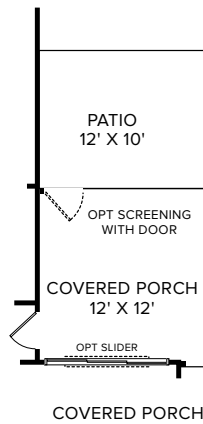
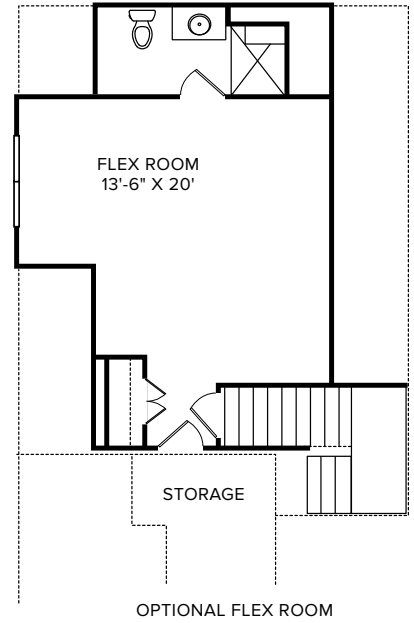
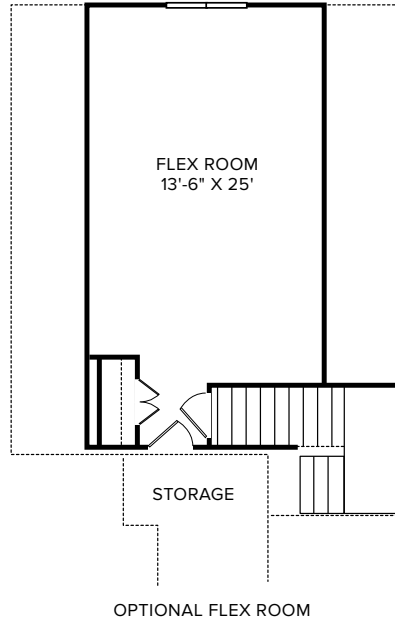
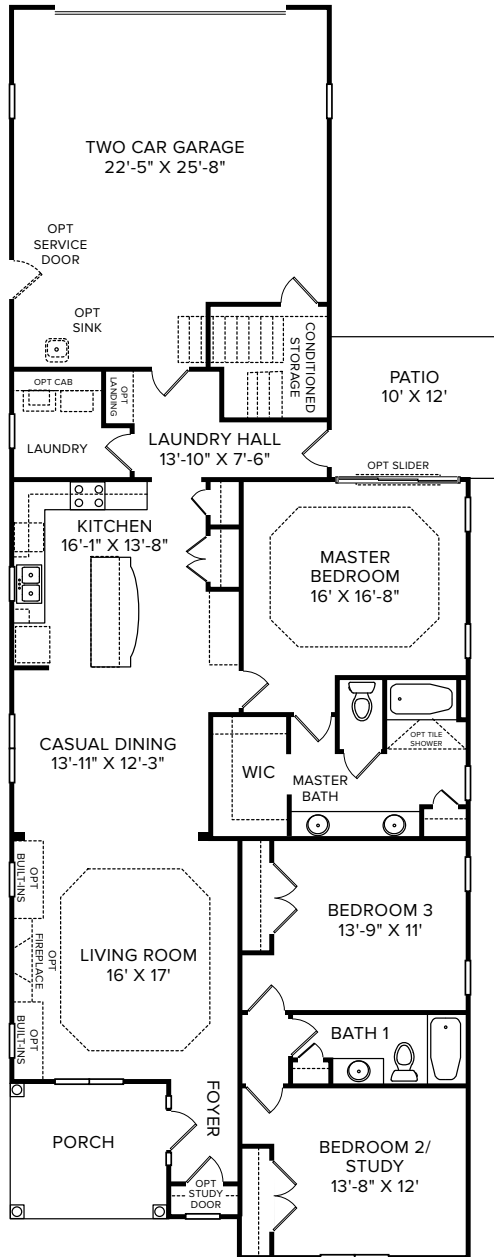


ELEVATION D





SOUTHPORT
1,919 SQ. FT.



*This floor plan illustrates a general plan which is subject to future change and revisions. Dimensions, boundaries and position locations are for illustrative purposes only and are not intended to be exact.

